


Ball Transfer Unit A7171-13

Ball Units Series A7 - Wheel S/2

 -30 °C - +100 °C


swivels easily


wear resistant


shock proof


floor protective


weather proof

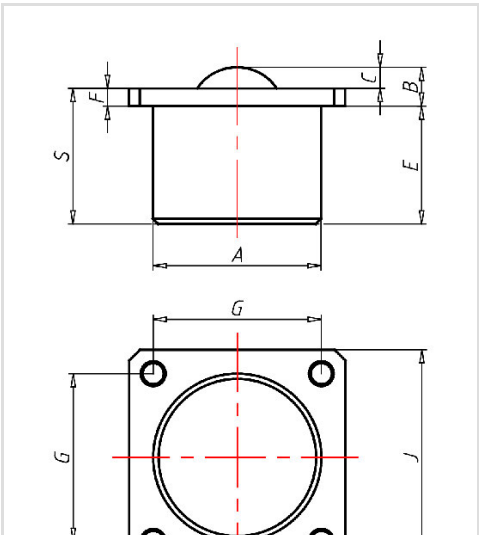
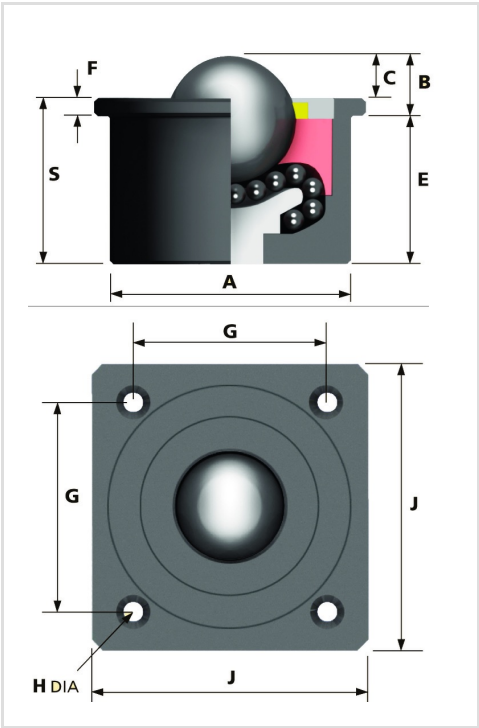
Wheel

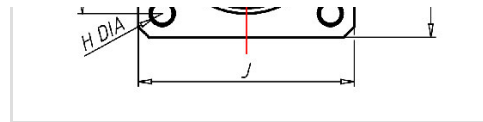
Ball: carbon steel or stainless steel

Units are machined using CNC machines
from one piece of steel

Hevi-Load units run on the re-circulating ball principle
The load ball rotates on a hardened bed of small balls

Ball Transfer Unit	
Series:	2
Ball-Ø mm:	50,8
Finish housing:	steel
Finish Balls:	carbon-steel
Load Capacity kg:	2000
Load capacity tested according to EN 12530 and EN 12527	
A mm:	101,6
B mm:	33,3
C mm:	14,3
E mm:	65
F mm:	19
G mm:	101,6
H mm:	11
J mm:	127
S mm:	84





Advantages

- ✓ Casing made of solid steel on the lathe
- ✓ units run on the re-circulating ball principle
- ✓ The load ball rotates on a hardened bed of small balls
- ✓ top plate with four fixing holes

©Copyright 2024 Rollenbau GmbH, www.rollenbau.at 02.05.2024

Applications

- Haulage way
- Assembly lines